

Ion Blower

Electrostatic Total Solution

SMB-60

By using high frequency this product satisfies Ion balance($\pm 20V$) which is suitable for IEC international standard. Detachable fan filter makes maintenance convenient and small size, light weight brings convenience to apply in various condition.

Key Features

- Mini size Ion Blower
- Mini size and light-weight Ion Blower that can be installed in numerous area
- Ion balance within $\pm 20V$
- Tip cleaning term can be extended by high frequency AC
- The safety is secured with low voltage (DC24V)



Specifications

Parameter	Description / Value
Input Power	DC 24V _Adaptor (AC110~220V, 50/60Hz, DC 24V, 1A)
Power Consumption	18W
Current Consumption	81mA (AC 220V)
Ion-Generation Method	High Frequency AC (Piezo)
Air Flow	1.086m ³ /min
Noise Level	51dB
Ion Balance	Within $\pm 20V$ (200mm, Maximum Air flow)
Operation Circumstance	0°C~+50°C (32°F~122°F), 35%~85%RH
Ozone(O ₃) Concentration	≤ 0.05 ppm
Main Body Material	EGI
Electrode Material	Standard : Tungsten / Option : Titanium
Weight	0.5kg
Function	Volume Fan Speed
Alarm Function	H/V Abnormal Alarm
Interface	Alarm(H/V Abnormal)
Warranty	1 year

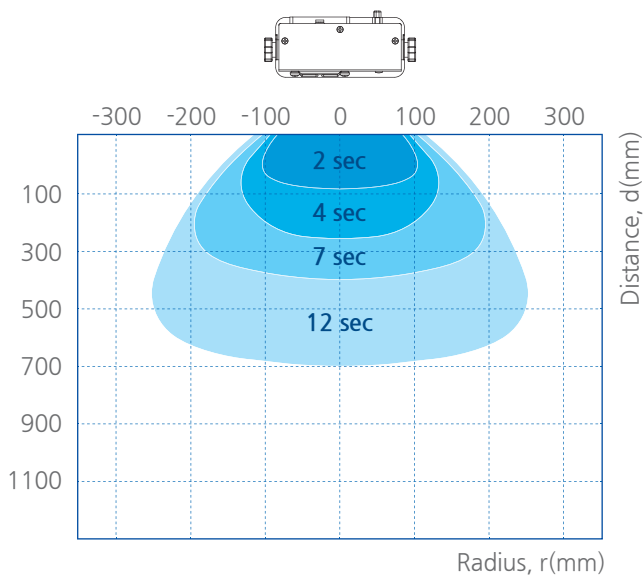
※ The appearance and specification of the product may be changed without prior notice for the improvement of the product.

Ion Blower

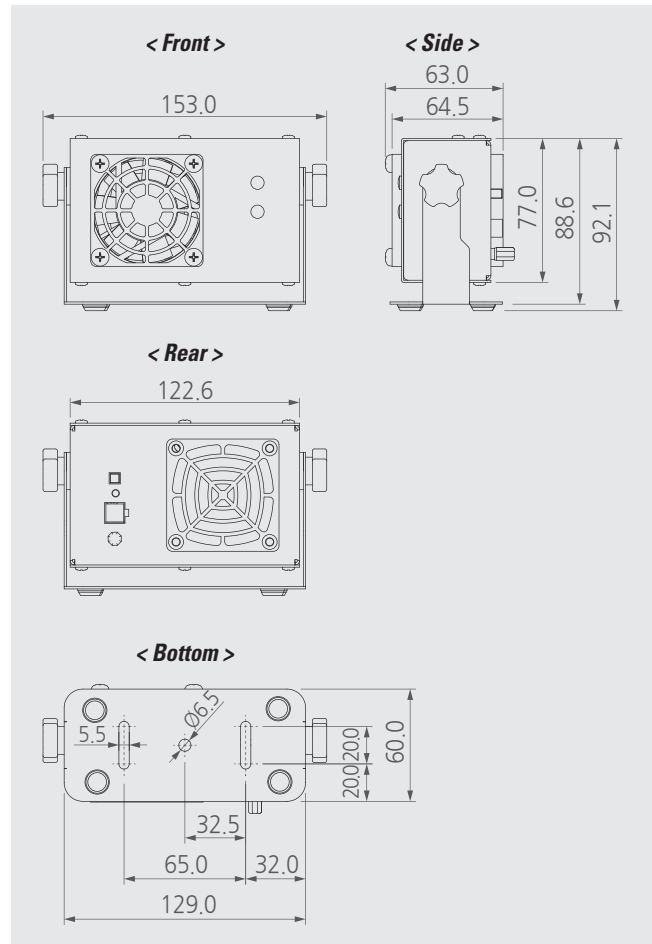
Electrostatic Total Solution

Decay Time Characteristics

- Model : SMB-60
- Decay Time : $\pm 1,000V$ to $\pm 100V$
- Charge Plate Capacitance : 20pF(150 X 150 mm)
- Temperature & Humidity : 24°C, 50%RH



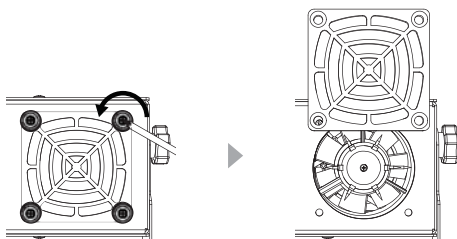
Dimensions



Maintenance

• Separating fan filter

1. Be sure to turn off main power before separating the fan filter.
2. Turn the screw of fan filter to counterclockwise using plus screwdriver.
3. Separate the fan filter.
4. Perform the cleaning or replacing of the fan filter and the discharge needle.



• Discharge needle cleaning

1. Be sure to power off before cleaning the ionizer.
2. Separate the fan filter from the backside of the product.
3. Soak the cotton swab with alcohol. (do not use acetone)
4. Put the swab on the discharge needle and wipe it turning the swab right and left. (take precautions not to apply severe force to the discharge needle.)
5. Replace the damaged discharge needle.
6. After the cleaning, let the alcohol applied to the discharge needle surface evaporate completely and then operate the SMB-60.
7. Please record the cleaning process as a reference in the file.