

All about electrostatics, our know-how is yours!

★ ★ ★
NEW
ARRIVAL
★

The Next Generation

Waterproof Soft X-ray Ionizer



SXB-05 / 10W Series

This ionizer is water proof structure for humid environment and bar type for wide range ionization. (able to use X-ray tubes from 2 to 9) Optimized for air knife area and available to use in various circumstance with its slim size. module structure (Tube replaceable) makes it easy to replace.



Key Features

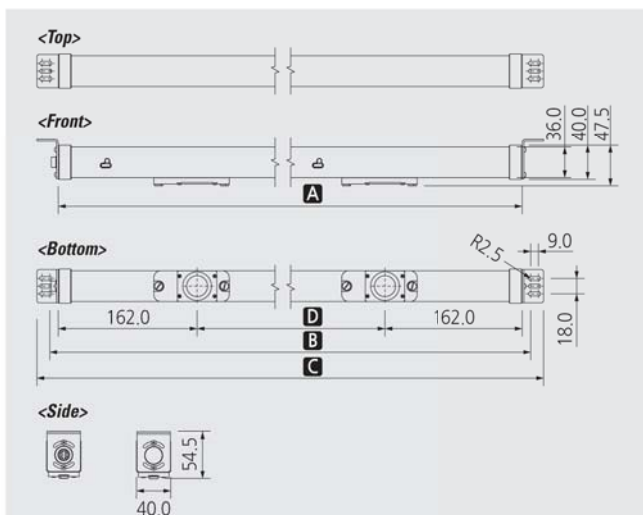
- Possible to use in humid area (Waterproof structure) (achieved IPX 5th grade)
※ IPX 5th grade : Protecting low pressure water from all direction
- Prompt tube replacing on the spot
- External controller type
- Possible to maintain long-term performance
- With RMS, possible to check operation status in real time (Option)

Specifications

Parameter	Description / Value
Ion Generation Method	Soft X-ray
Source	Soft X-ray Tube
Beam Angle	150°
Input Power	AC 100~240V, 50/60Hz
Power Consumption (with Bar)	Max. 130W
Operation Circumstance	0°C ~ +50°C(32°F ~ 122°F), 35% ~ 85% RH
Dimensions	Please Refer to Dimension Drawing
Alarm Function	H/V Abnormal, Communication Error
Interface	(Run, Alarm, Power, Over Time, Remote, Interlock) Remote On/Off, Interlock On/Off, Output State
Controller Fuse	250V, 3A, 5X20 Glass Type Fuse
Weight	Controller (SXC-10BT) 1.05kg
Warranty	1 year

※ The appearance and specification of the product may be changed without prior notice for the improvement of the product.

Dimensions



No.	Model No.	A	B	C	D	Tube Q'TY	
1	SXB-05W-300-1	SXB-10W-300-1	324	344	374	-	1
2	SXB-05W-600-2	SXB-10W-600-2	635	655	685		2
3	SXB-05W-900-3	SXB-10W-900-3	946	966	996		3
4	SXB-05W-1200-4	SXB-10W-1200-4	1257	1277	1307		4
5	SXB-05W-1500-5	SXB-10W-1500-5	1568	1588	1618		5
6	SXB-05W-1800-6	SXB-10W-1800-6	1879	1899	1929		6
7	SXB-05W-2200-7	SXB-10W-2200-7	2190	2210	2240		7
8	SXB-05W-2500-8	SXB-10W-2500-8	2501	2521	2551		8
9	SXB-05W-2800-9	SXB-10W-2800-9	2812	2832	2862		9
10	SXB-10W-900-2		946	966	996		2
11	SXB-10W-1500-3		1568	1588	1618		3
12	SXB-10W-2200-4		2190	2210	2240	622	4
13	SXB-10W-2800-5		2812	2832	2862		5
14	SXB-10W-3400-6		3434	3454	3484		6

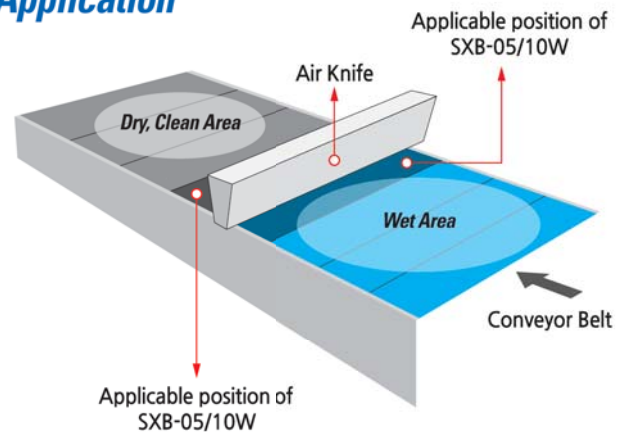
※ For improved quality product appearance can be changed without notice.

Performance

- **Model** : SXB-05W-600-2 / SXB-10W-600-2
- **Decay Time** : ±1,000V to ±100V
- **Temperature & Humidity** : 24°C, 50%RH
- **Charge Plate Capacitance** : 20pF (150 X 150mm)

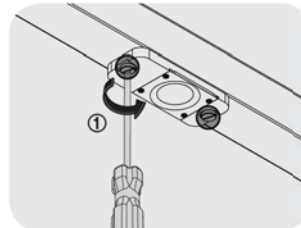
Distance [mm]	Model	Decay Time [sec.]			
		Tube Module-1		Tube Module-2	
		(+)	(-)	(+)	(-)
200	SXB-05W-600-2	2.5	2.6	2.5	2.6
300	SXB-10W-600-2	0.4	0.5	0.4	0.5

Application



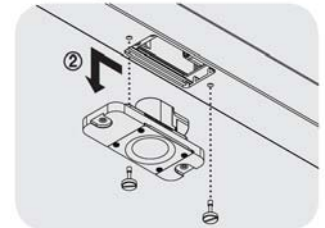
Maintenance

< Unscrew a Fixing Bolt >



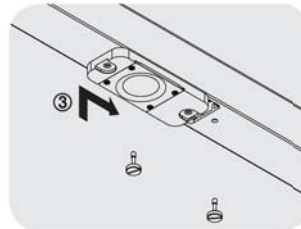
Using flat-head screwdriver, turn the bolts to the counterclockwise to release.

< Separating Tube >



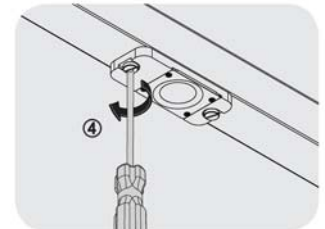
Slide the tube to the left to separate it.

< Replacing New Tube >



Check the direction of high voltage connector on new tube. Put it in vertical way and push away to the right.

< Screw a Fixing Bolt >



Once the new tube is inserted, fix the bolts using screwdriver.