

All about electrostatics, our know-how is yours!

★ ★ ★
BEST
Products
★

The Next Generation

Slim Bar Soft X-ray Ionizer



SXB-10N Series

This is bar type ionizer having 1 to 9 X-ray windows so that is effective for ionizing wide area. Slim size is useful to be installed in various conditions and module structure (Tube replaceable) makes it easy to replace.



Key Features

- The smallest size in the same line of products
(possible to ionize on the surface and rear side)
- No CDA needed, No scattering particle problem
- $\pm 0V$ Ion Balance
- Managing process under 100V constant voltage
- Easy attachable/detachable Module structure
- Purchasing by the individual parts brings economic savings
- With RMS(Real Monitoring System), possible to check operation status in real time (Option)

SUNJE We are always doing the best
to satisfy customer needs!

X Soft X-Ray Ionizer

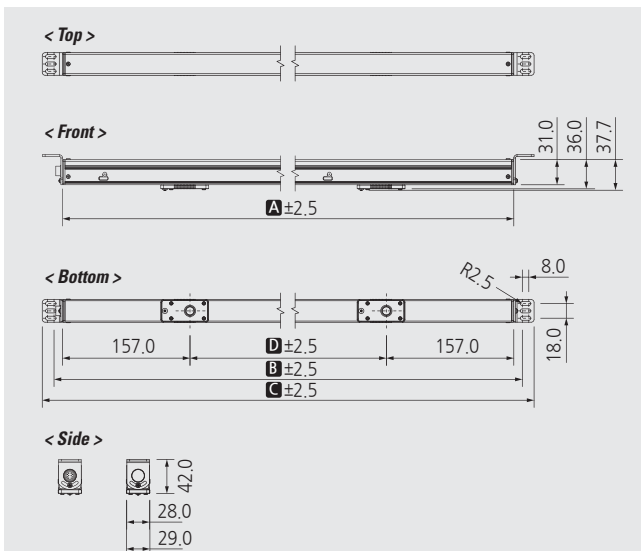
8, Cheonggwang-gil, Ilgwang-eup, Gijang-gun, Busan, Korea
E-mail : info@sunstat.com Tel : 051) 720-7500

Specifications

Parameter	Description / Value
Ion Generation Method	Soft X-ray
Source	Soft X-ray Tube
Tube Voltage	11kV
Beam Angle	150°
Power Consumption (with Controller)	Max. 130W
Operation Circumstance	0°C ~ +50°C(32°F ~ 122°F), 35% ~ 85% RH
Warranty	1 year

※ The appearance and specification of the product may be changed without prior notice for the improvement of the product.

Dimensions

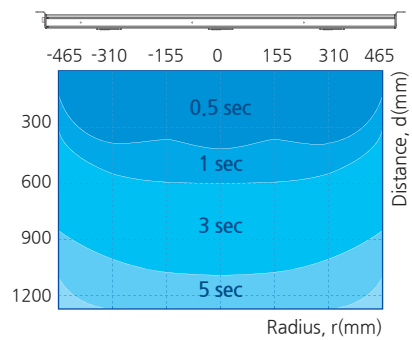
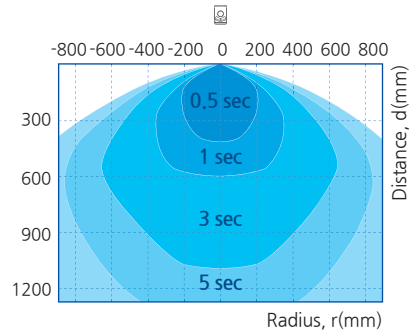


No.	Model No.	A	B	C	D	Tube Q'ty
1	SXB-10N-300-1	314	335	391	-	1
2	SXB-10N-600-2	625	646	675	-	2
3	SXB-10N-900-3	936	957	986	311	3
4	SXB-10N-1200-4	1247	1268	1297	311	4
5	SXB-10N-1500-4	1558	1579	1608	414.6	4
6	SXB-10N-1500-5	1558	1579	1608	311	5
7	SXB-10N-1800-5	1869	1890	1919	388.8	5
8	SXB-10N-1800-6	1869	1890	1919	311	6
9	SXB-10N-2200-6	2180	2201	2230	373.2	6
10	SXB-10N-2200-7	2180	2201	2230	311	7
11	SXB-10N-2500-7	2491	2512	2541	362.8	7
12	SXB-10N-2500-8	2491	2512	2541	311	8
13	SXB-10N-2800-7	2802	2823	2852	414.6	7
14	SXB-10N-2800-9	2802	2823	2852	311	9
1	SXB-10N-900-2	936	957	986	622	2
2	SXB-10N-1200-3	1247	1268	1297	466.5	3
3	SXB-10N-1500-3	1558	1579	1612	622	3
4	SXB-10N-1800-4	1869	1890	1919	518.3	4
5	SXB-10N-2200-4	2180	2201	2230	-	4
6	SXB-10N-2800-5	2802	2823	2852	622	5
7	SXB-10N-3400-6	3424	3445	3474	622	6

※ Model line up is changeable depending on Tube Pitch (**D**) and Tube Q'ty except for regular Line Up above.
 ※ Tube Pitch can be changed within the range of 311~622mm Tube Q'ty Max. 9ea

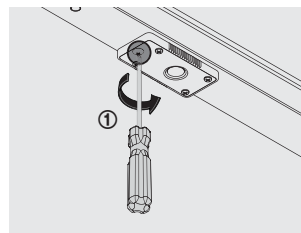
Performance

- Decay Time : ±1,000V to ±100V
- Temperature & Humidity : 24°C, 50%RH
- Charge Plate Capacitance : 20pF (150 X 150mm)
- Radiation Angle : 150°
- Model : SXB-10N-1500-3



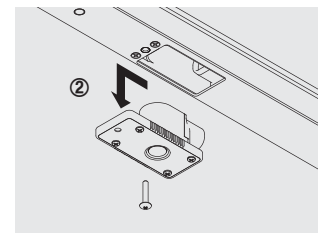
Maintenance

◁ Unscrew a Fixing Bolt ▷



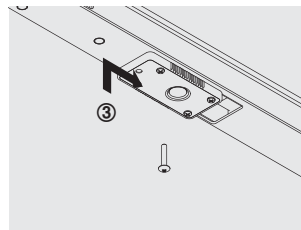
Using X-head screwdriver, turn the bolts to the counterclockwise to release.

◁ Separating Tube ▷



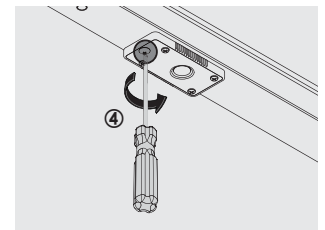
Slide the tube to the left to separate it.

◁ Replacing New Tube ▷



Check the direction of high voltage connector on new tube. Put it in vertical way and push away to the right.

◁ Screw a Fixing Bolt ▷



Once the new tube is inserted, fix the bolts using screwdriver.